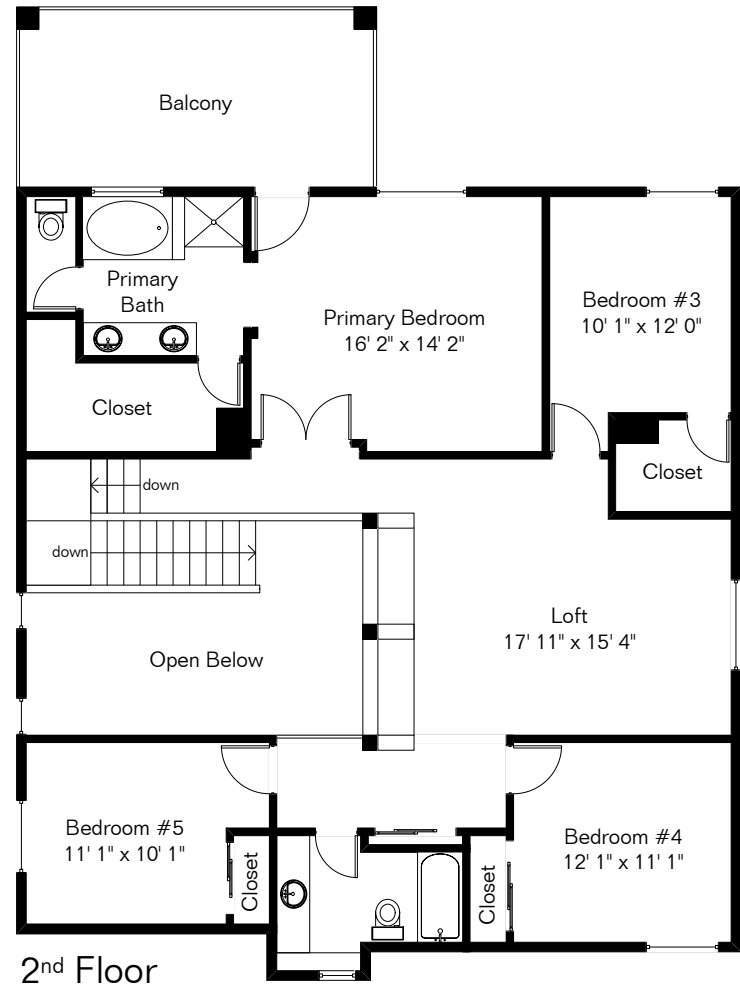
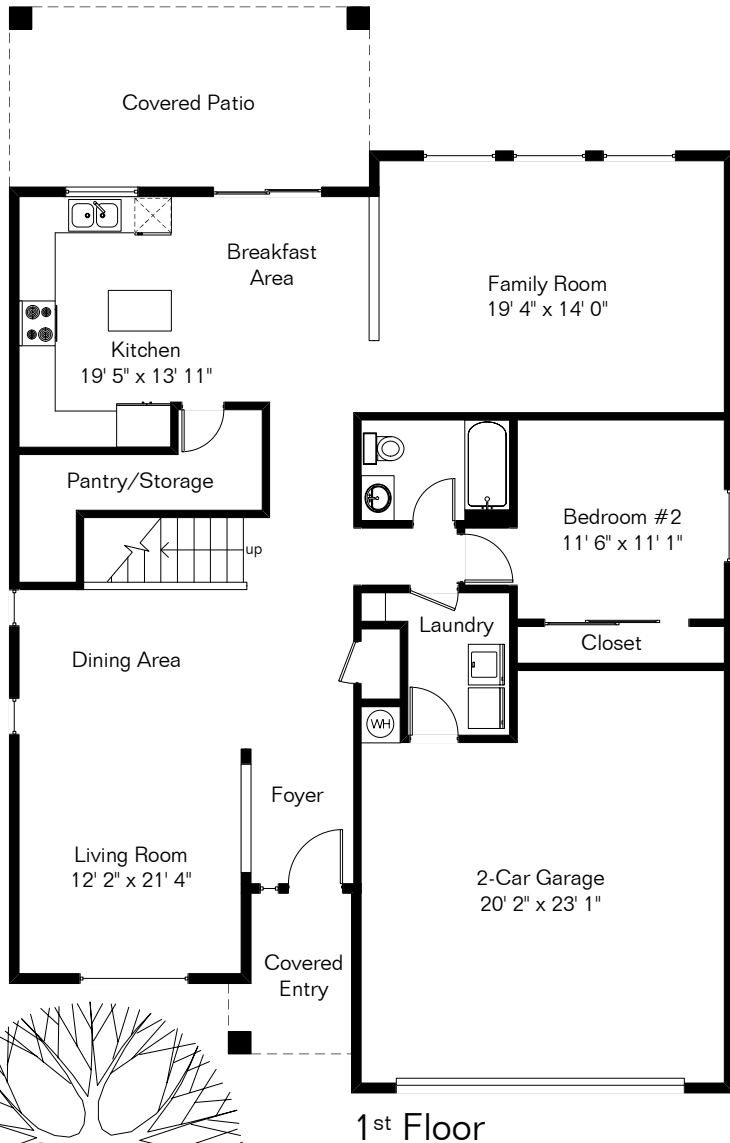


The square footages and room size information are deemed to be reliable but are not guaranteed and should be independently verified. This drawing is for marketing purposes only.

# 19372 N Kari Lane



1st Floor 1,462 Sq Ft  
 2nd Floor 1,534 Sq Ft  


---

 Total Living Area 2,996 Sq Ft  
 Garage 461 Sq Ft

Site Visit October 2023  
 0 ft. 6 ft. 10 ft. 20 ft.  
 Equal Opportunity  
 Copyright 2023 Floor Plans First! LLC  
 All Rights Reserved.

